

# ECE 320 - Quiz #6 - Name \_\_\_\_\_

H Bridges, DC to DC Converters

## H-Bridge Analysis:

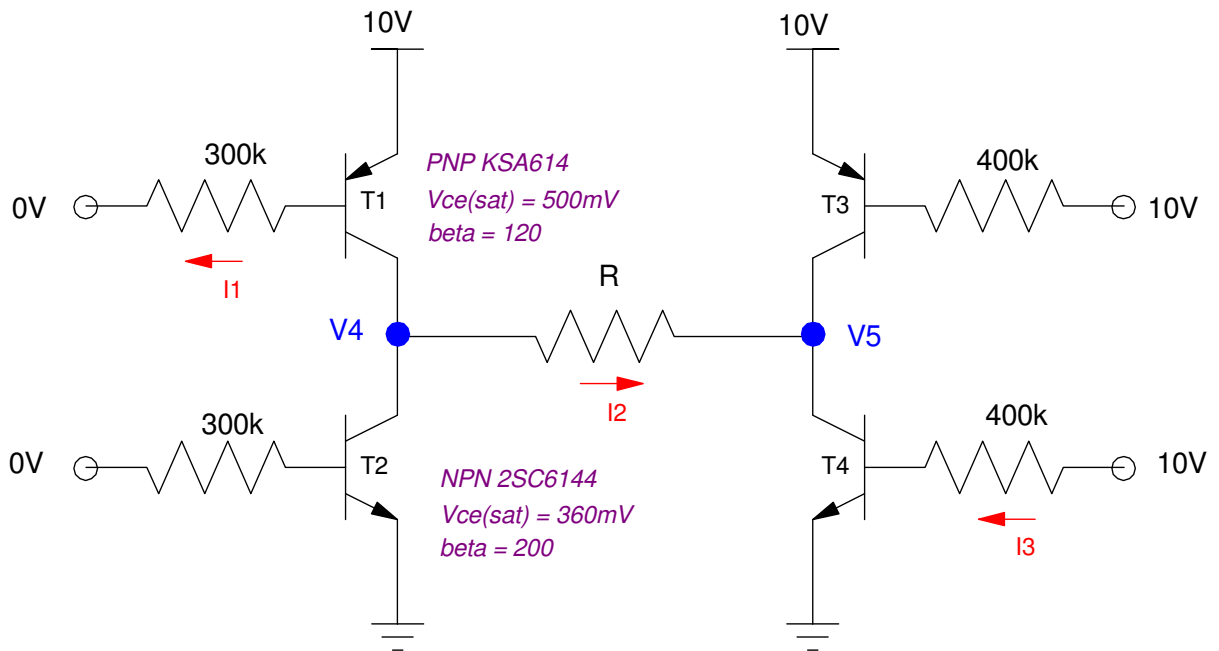
1) Determine the voltages and currents for the following H-bridge. Assume ideal transistors:

PNP (KSA614)			NPN (6144)		
$ V_{be} $	$ V_{ce(sat)} $	$h_{fe} = \beta$	$ V_{be} $	$ V_{ce(sat)} $	$h_{fe} = \beta$
700mV	500mV	120	700mV	360mV	200

Let  $R = 1000 + 100 * (\text{Birth Month}) + \text{Birth Day}$ . May 14th would give  $R = 1514$  Ohms.

Determine the voltages and currents

R	I1	I2	I3	V4	V5
$1000 + 100 * \text{mo} + \text{day}$					



## H-Bridge Analysis:

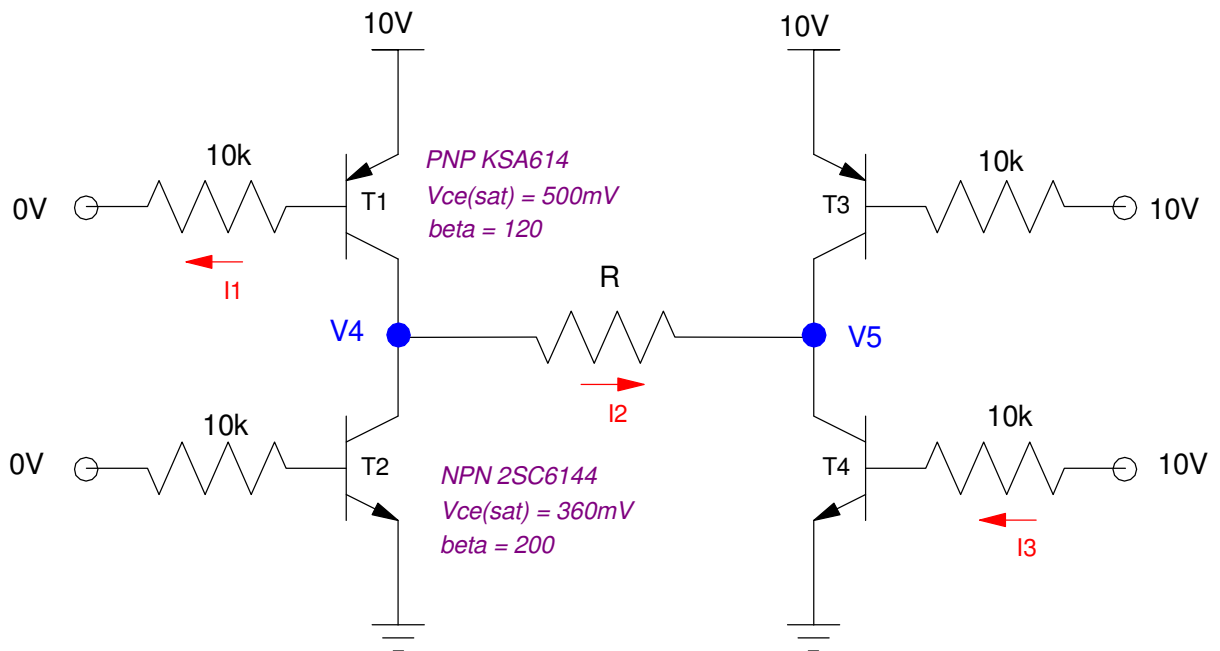
2) Determine the voltages and currents for the following H-bridge. Assume ideal transistors:

PNP (KSA614)			NPN (6144)		
$ V_{be} $	$ V_{ce(sat)} $	$h_{fe} = \beta$	$ V_{be} $	$ V_{ce(sat)} $	$h_{fe} = \beta$
700mV	500mV	120	700mV	360mV	200

Let  $R = 1000 + 100 * (\text{Birth Month}) + \text{Birth Day}$ . May 14th would give  $R = 1514$  Ohms.

Determine the voltages and currents

R	I1	I2	I3	V4	V5
$1000 + 100 * \text{mo} + \text{day}$					

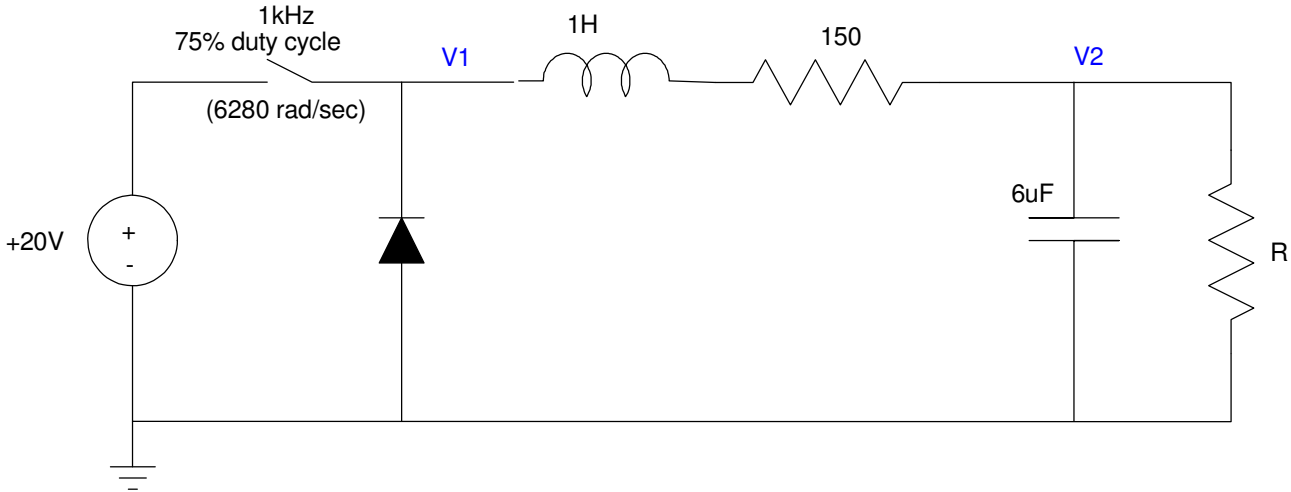


### DC to DC Converter

3) Determine the voltages at V1 and V2 (both DC and AC). Assume

- $R = 1000 + 100 * (\text{Birth Month}) + \text{Birth Day}$ . May 14th would give  $R = 1514$  Ohms.

R	V1		V2	
	V1(DC)	V1(AC)	V2(DC)	V2(AC)

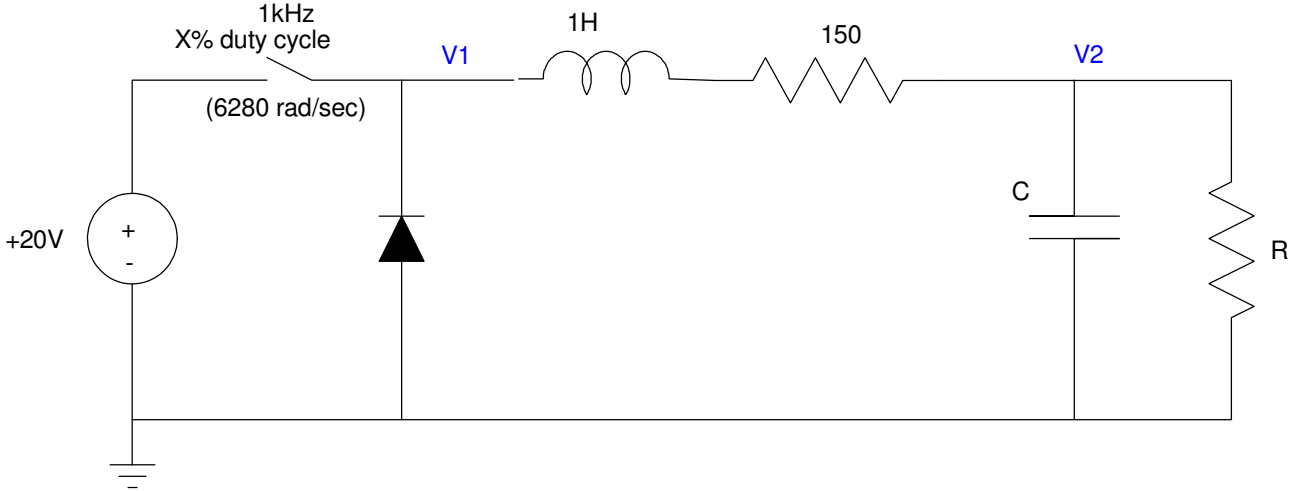


# DC to DC Converter: Design

4) Determine the duty cycle and C so that

- V2(DC) is 12.50V
- V2(AC) = 1.00Vpp
- $R = 1000 + 100 * (\text{Birth Month}) + \text{Birth Day}$ . May 14th would give  $R = 1514$  Ohms.

X% (duty cycle) V2(DC) = 12.50V	C V2(AC) = 1.00Vpp	R 1000 + 100*Mo + Day

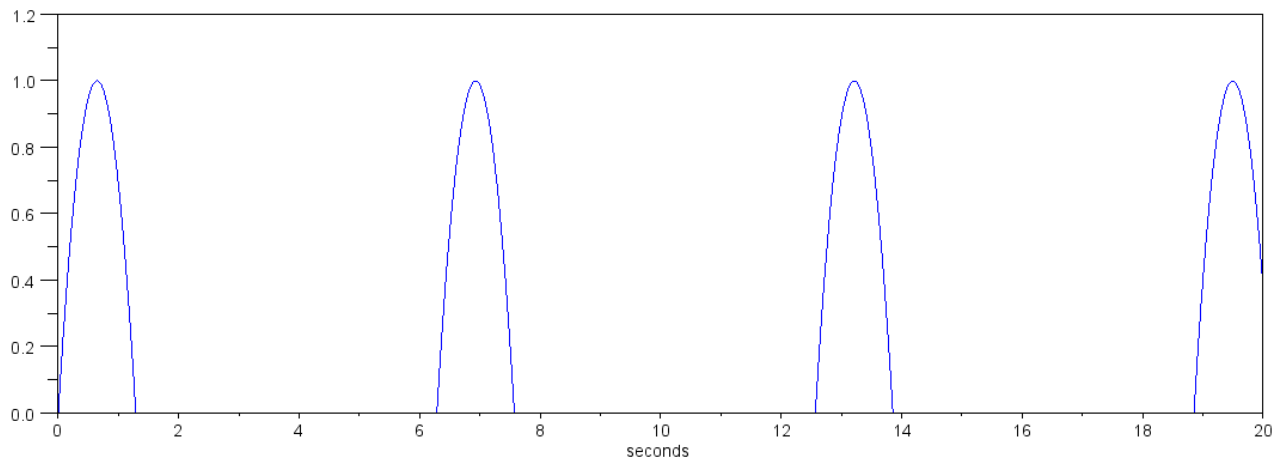


## Fourier Transform

5) (Matlab recommended) Determine the DC term and the first two harmonics for the following waveform

$$x(t) = \max(0, 3 \sin(t) + 4 \cos(t) - 4)$$

$$x(t) \approx a_0 + a_1 \cos(t) + b_1 \sin(t) + a_2 \cos(2t) + b_2 \sin(2t)$$



## Fourier Transform

6) Determine  $y(t)$  given that

- $x(t) = 10 + 6 \sin(200t) + 7 \cos(400t)$
- $R = 1000 + 100 * (\text{your birth month}) + (\text{your birth date})$ .

