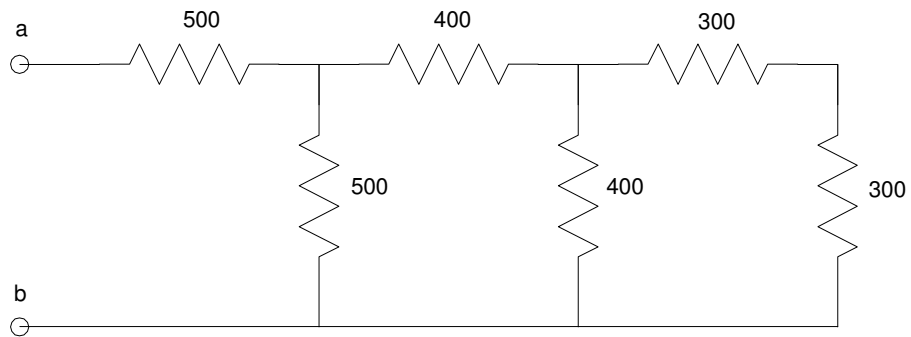


ECE 320 - Quiz #1 - Name _____

EE 206 Review. January 24, 2020

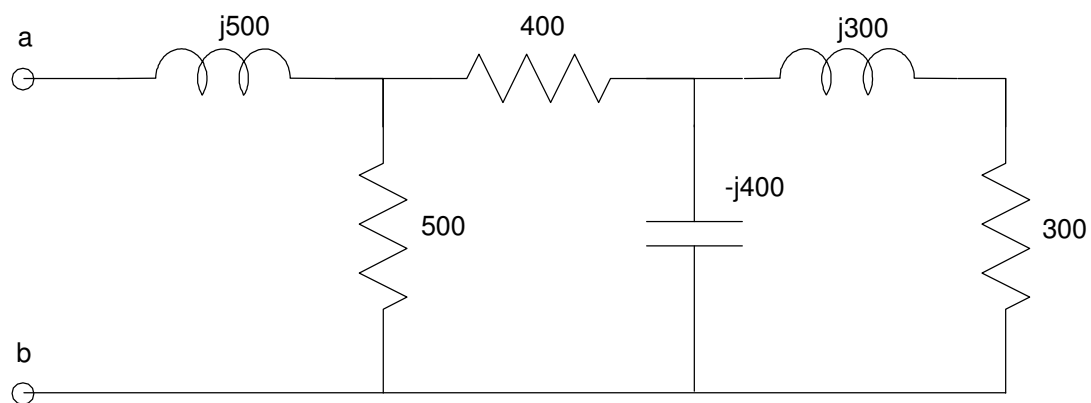
1) Determine the resistance R_{ab}

$R_{ab} =$

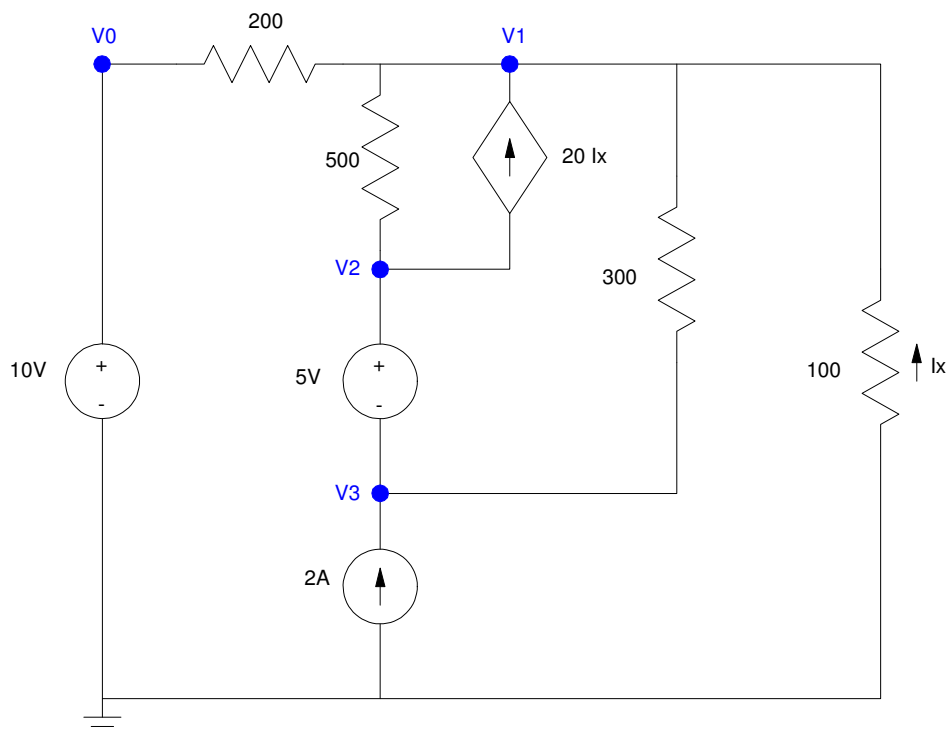


2) Determine the resistance R_{ab} (it will be a complex number)

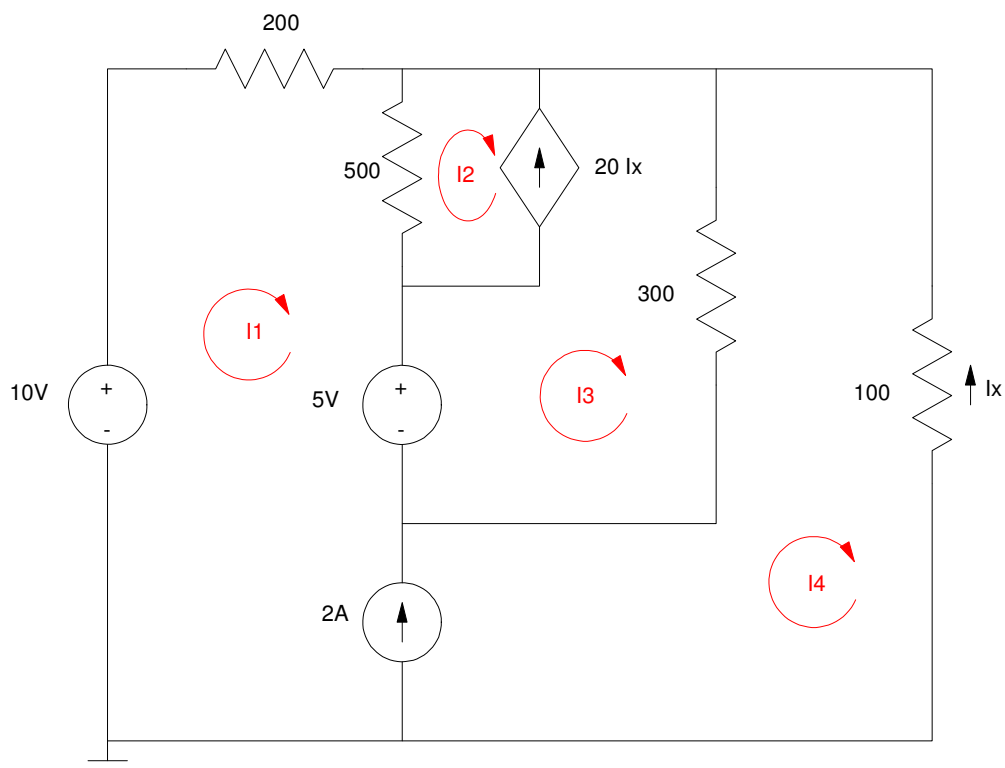
$R_{ab} =$



3) Give N voltage node equations to solve for the N unknown voltages.

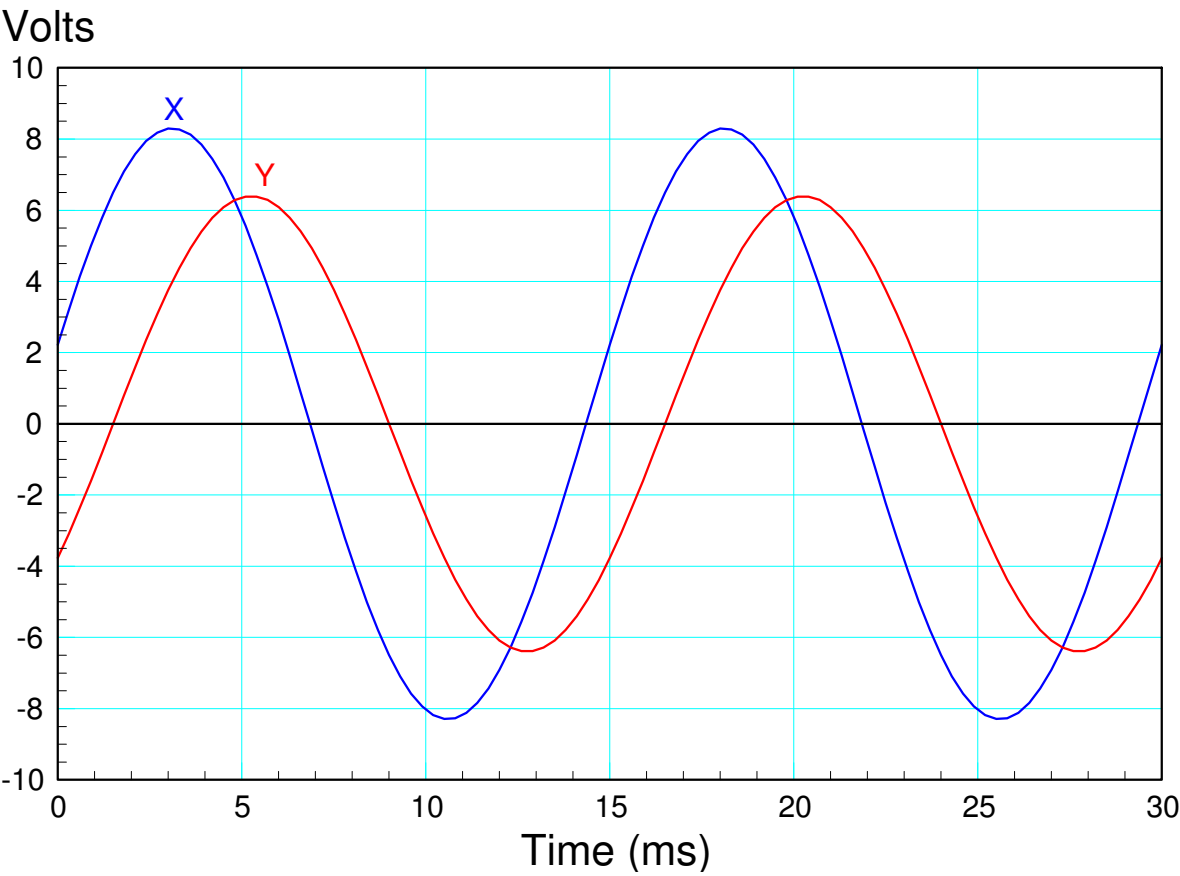


4) Give N current loop equations to solve for the N unknown currents



5) Signals X and Y are displayed on an oscilloscope. Give the phasor representation for these two voltages

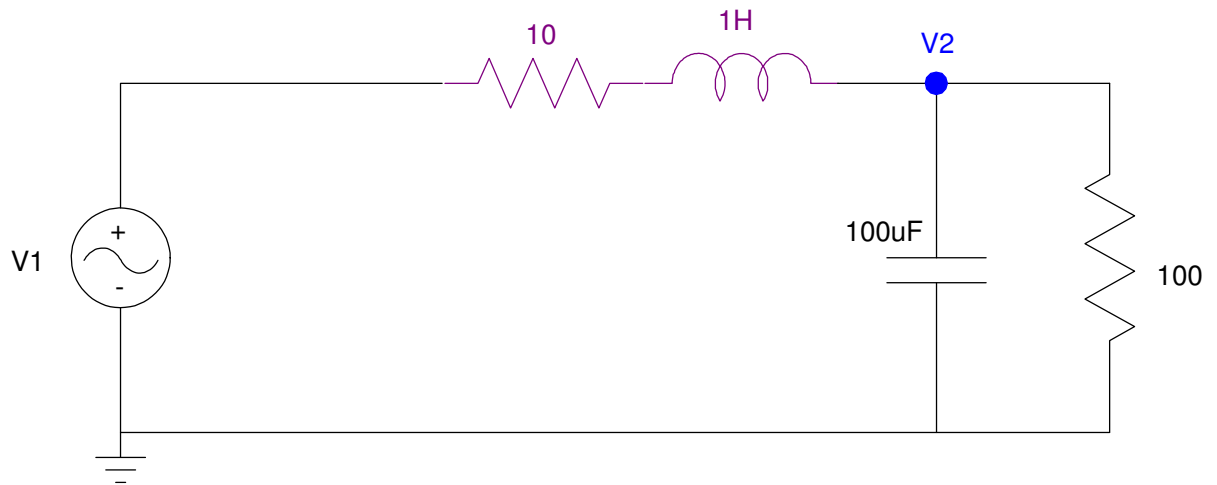
Frequency (Hz)	X		Y	
	Amplitude	Phase	Amplitude	Phase



6) Determine $V_2(t)$ assuming

$$V_1(t) = 12 + 15 \sin(400t)$$

$V_2(t) =$



Bonus! Bernie Sanders Trivia!!! Which is the oldest (circle one)?

The oldest edible cheese (Bleader) - The oldest (drinkable) champaign - Godzilla (first movie) - Bernie Sanders