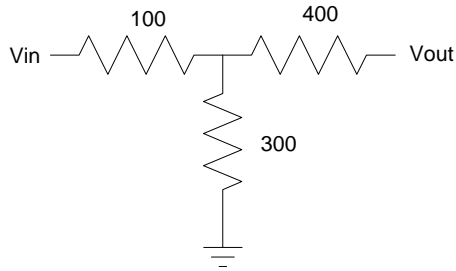


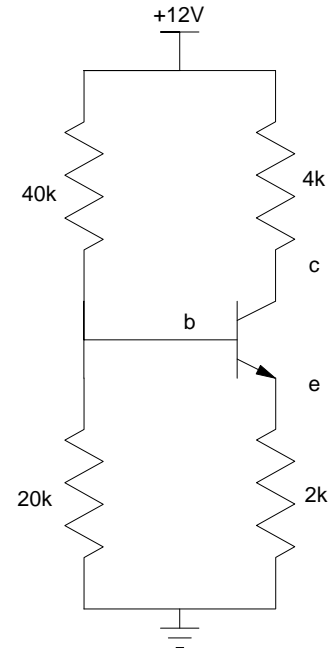
ECE 321 - Homework #5

Filters. Due Monday, November 28th

- 1) Find the 2-port model for the following circuit
- 2) Determine the Q-point for the following circuit. Assume $\beta = 100$.



Problem 1



Problem 2

- 3) Change the previous design so that the Q-point is
 - $V_{ce} = 6V$
 - Q-Point is stabilized for variations in β
- 4) Specify the requirements for your ECE 321 term project.
 - Inputs
 - Outputs
 - How they relate
- 5) Break down your term project into 2 or more sections which include
 - A push-pull amplifier,
 - A filter, and
 - An amplifier

For each section, specify its

- Inputs
- Outputs and
- How they relate